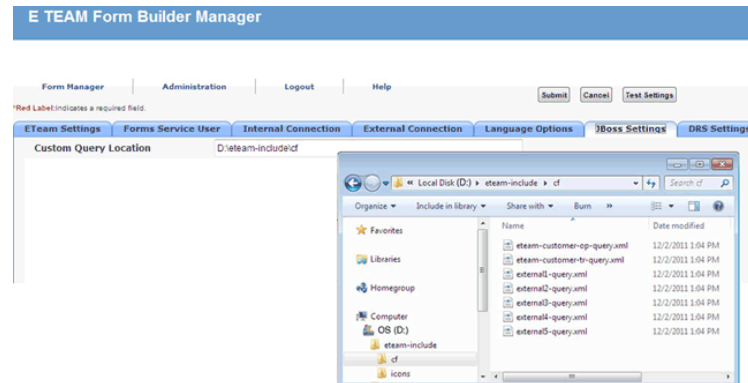


Form Builder - Querying Data Stores

supportcenter.nc4.com/hc/en-us/articles/218362318-Form-Builder-Querying-Data-Stores

Custom forms queries are stored on the E Team server. The query repository is created when E Team is deployed and can be found on your server at eteam-include > cf. You can also find the path to the query repository by logging into the custom forms administration console and navigating to JBoss Settings.

E Team has a total of 7 query files. One each for Operations and Training and five (5) additional files for queries utilizing databases outside of E Team. All queries and/or changes to queries can be hot deployed, there is no need to stop and restart the E Team service. Queries will NOT be overwritten on subsequent application patch or upgrade.



Was this article helpful?

0 out of 0 found this helpful

0 Comments

Be the first to write a comment.